

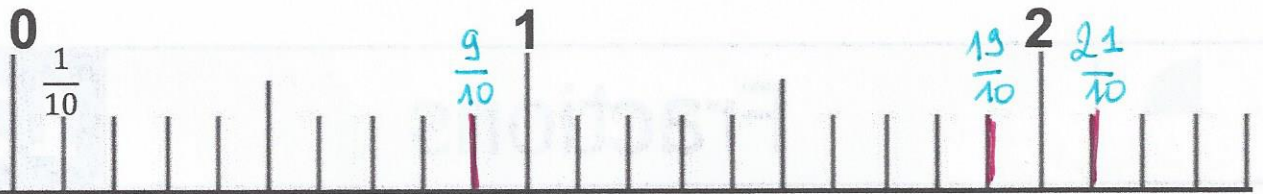


Fractions

8

Place les fractions sur la droite graduée :

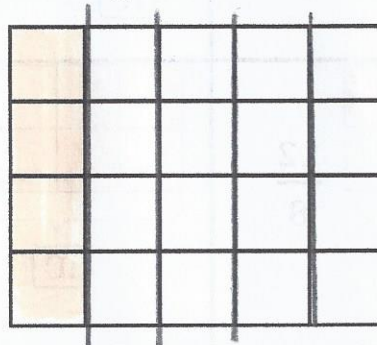
$$\frac{9}{10}; \frac{19}{10}; \frac{21}{10}$$



Fractions

9

Partage ce rectangle en 5 parties égales et colorie alors $\frac{1}{5}$ du rectangle :

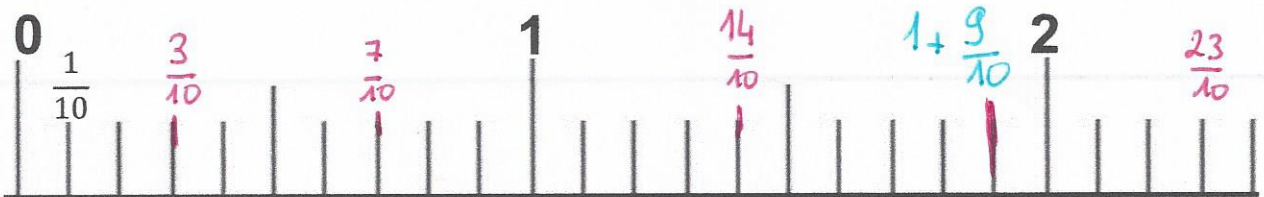


Fractions

10

Place les fractions sur la droite graduée :

$$\frac{3}{10}; \frac{7}{10}; \frac{23}{10}; \frac{14}{10}; 1 + \frac{9}{10}$$





Fractions

11

Compare les fractions :

$$\frac{3}{5} < \frac{6}{5}$$

$$\frac{3}{4} < \frac{6}{4}$$

$$\frac{7}{5} > \frac{6}{5}$$

$$\frac{13}{2} > \frac{11}{2}$$

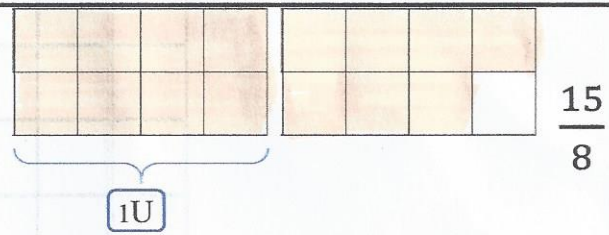
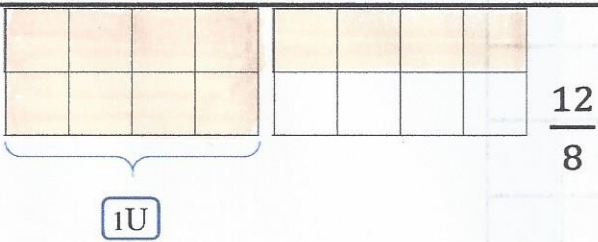
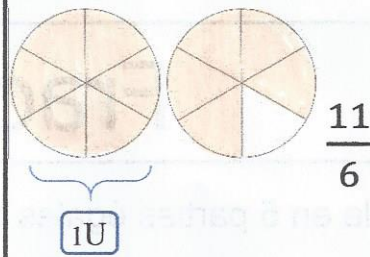
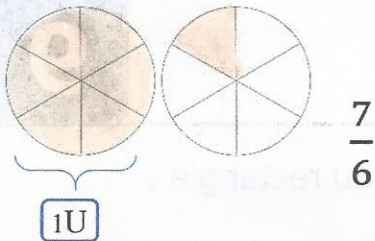
$$\frac{11}{10} > \frac{9}{10}$$



Fractions

12

Colorie les fractions demandées :



Fractions

13

Compare les fractions :

$$\frac{3}{5} < 1$$

$$\frac{3}{4} < 1$$

$$\frac{7}{5} > 1$$

$$\frac{13}{2} > 1$$

$$\frac{3}{10} < 1$$

$$\frac{11}{10} > 1$$